

Welcome to Noida International Airport Stakeholder Consultation



Content

1	Introduction
2	Phase I Development
3	Design & Operations
4	Community Development & Awards
5	Project Cost & Proposed Rate Card



OUR PROMOTER

Zurich Airport Ltd

Public Company

Canton of Zurich 33.3%
City of Zurich 5%
Publicly Traded 61.7%

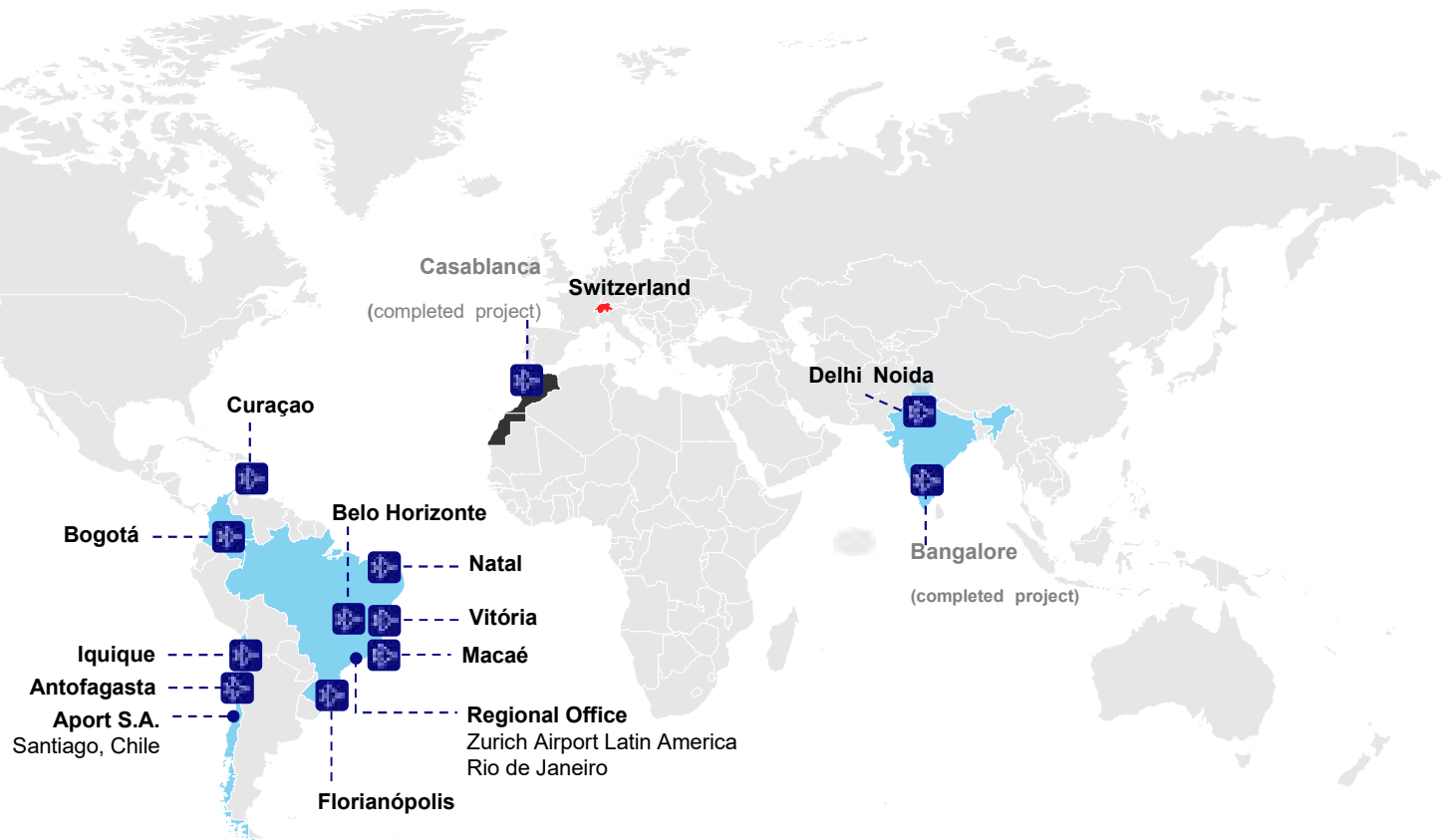
Over 75 Years of Experience

Operating Zurich Airport since 1948

Successful Business

USD 1.7 billion turnover
1700 employees

Eleven Airports in Europe, Latin America and India



Overview of Noida International Airport

100% FDI

Yamuna International Airport Pvt Ltd (YIAPL), a 100% subsidiary of Zurich Airport International AG, formed to develop Noida International Airport (NIA)

To design, build and operate a new greenfield international airport for western Uttar Pradesh and National Capital Region (NCR)

40-Year Concession



Capacity 12m in Ph 1

Phase 1 capacity for 12m annual passengers when the airport opens. Growth to over 70m annual passengers in four development phases.

Global Excellence with Indian Warmth.

**Indian hospitality
with Swiss efficiency**

Location & Catchment Area

By road



By air



- Estimated population of **60-95 million** within **120 minutes** of travel time to Noida Airport
- Serves as the **primary international airport** for major cities such as Noida, Meerut, Ghaziabad, Mathura, Agra etc.
- Gateway to **pilgrimage and tourist destinations**
- Potential demand for **business and leisure** to other regions in SAARC, Middle East and Asia
- **High cargo demand centers** in the immediate catchment

Noida's infrastructure will be aligned to serve this catchment



NOIDA INTERNATIONAL AIRPORT

Serving Western Uttar Pradesh and Delhi NCR

Prime Location

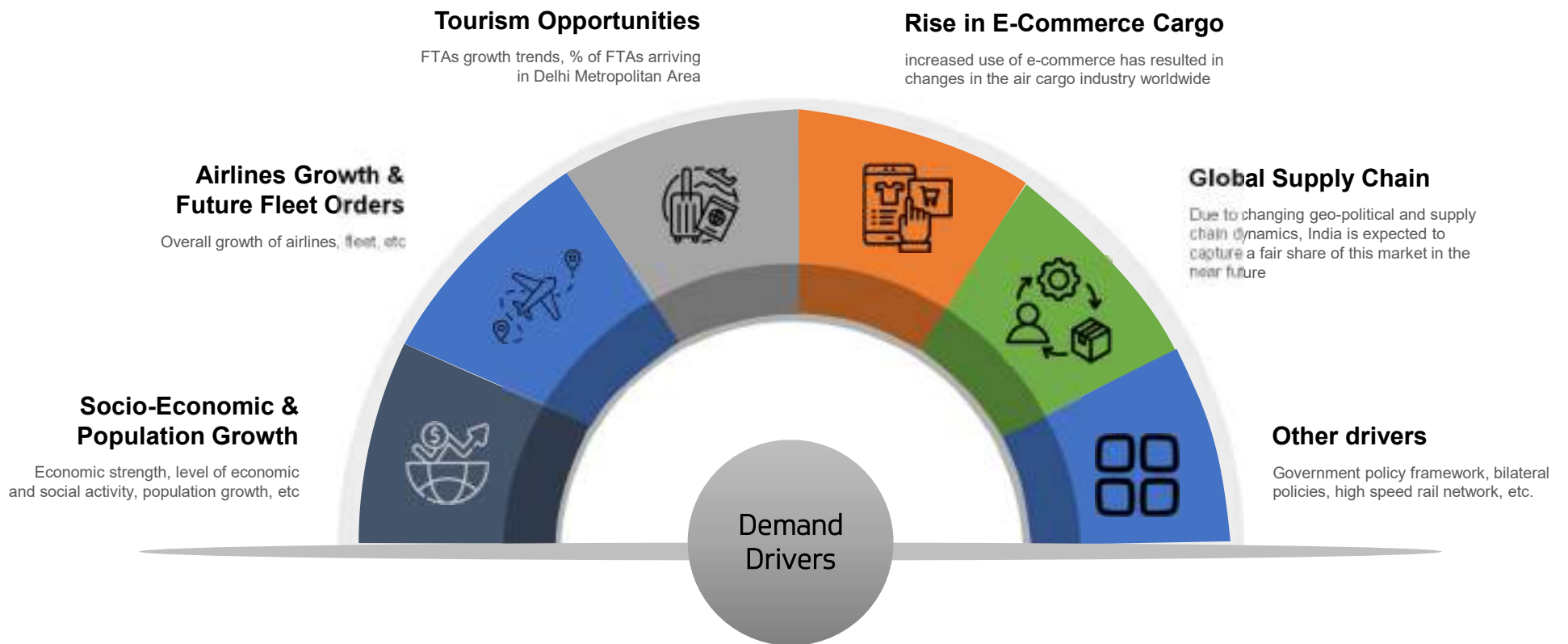
70 km from [Delhi](#)
40 km from [Noida](#)
130 km from [Agra](#)

Well Connected

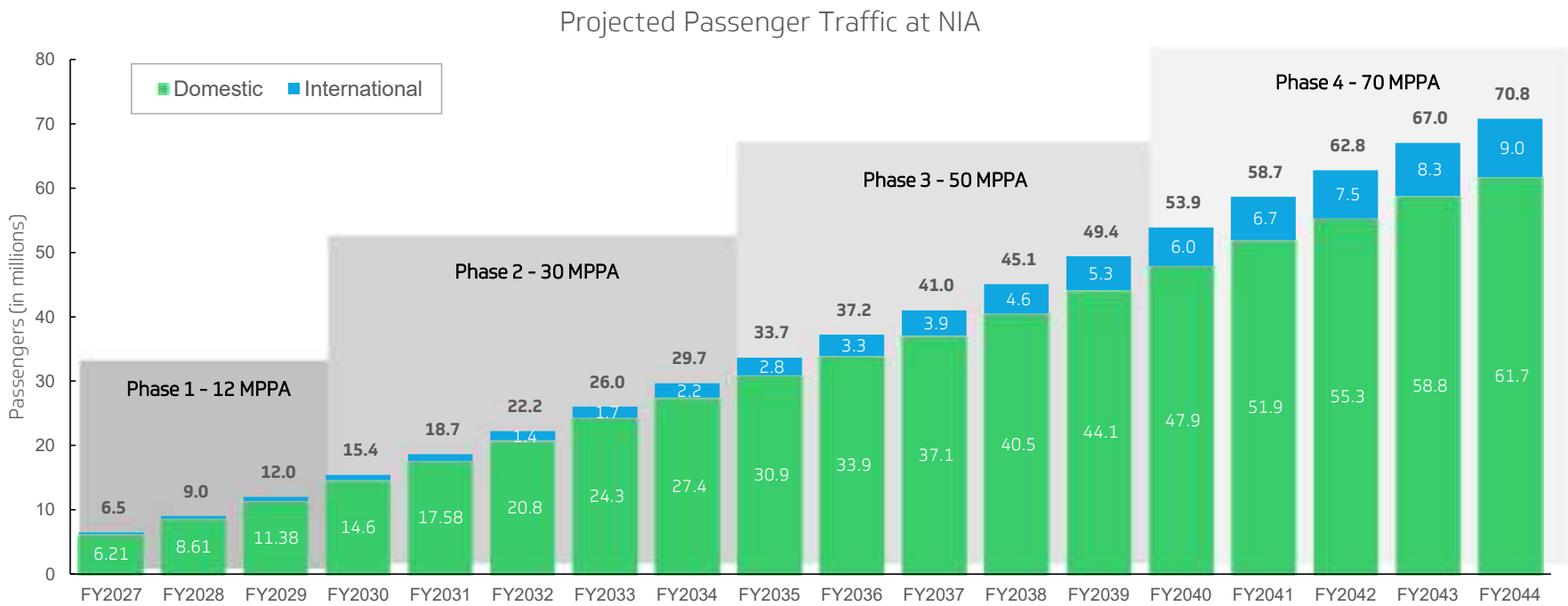
Adjacent to [Yamuna Expressway](#) connecting Delhi and Noida with Agra and Lucknow
[Metro](#) and [high-speed rail](#) links planned

Video

Multiple factors drive air traffic demand at NIA



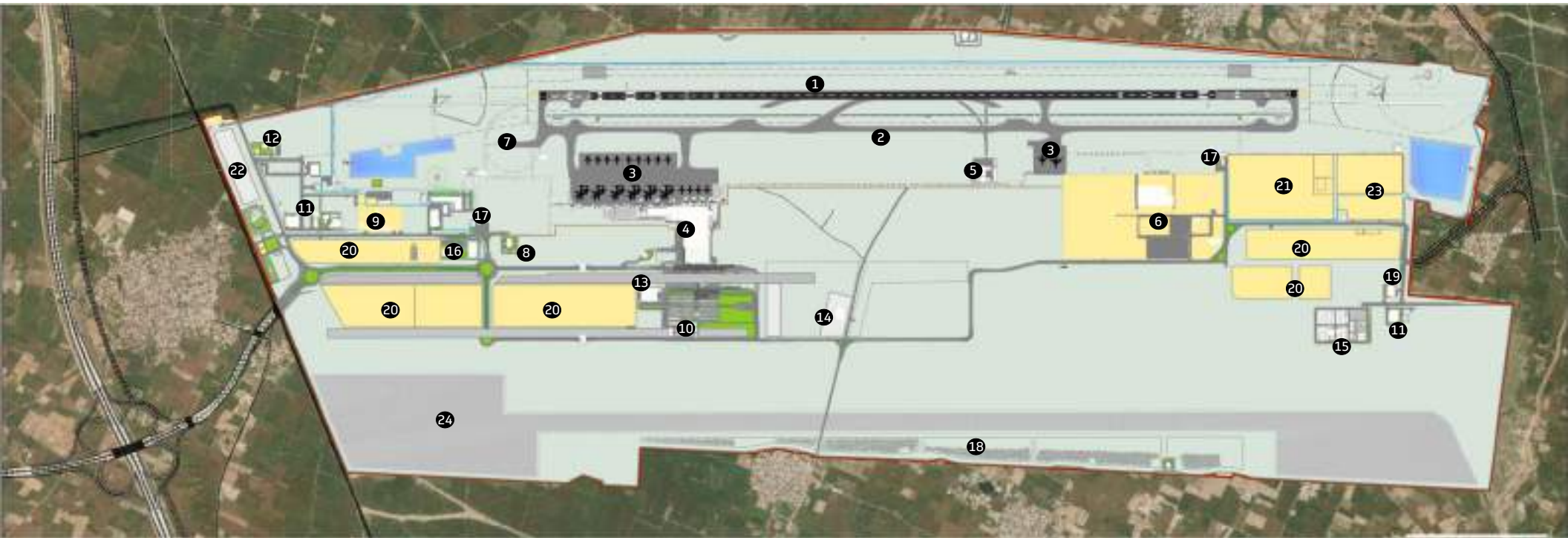
Traffic projections reflect growing demand in the region



Content

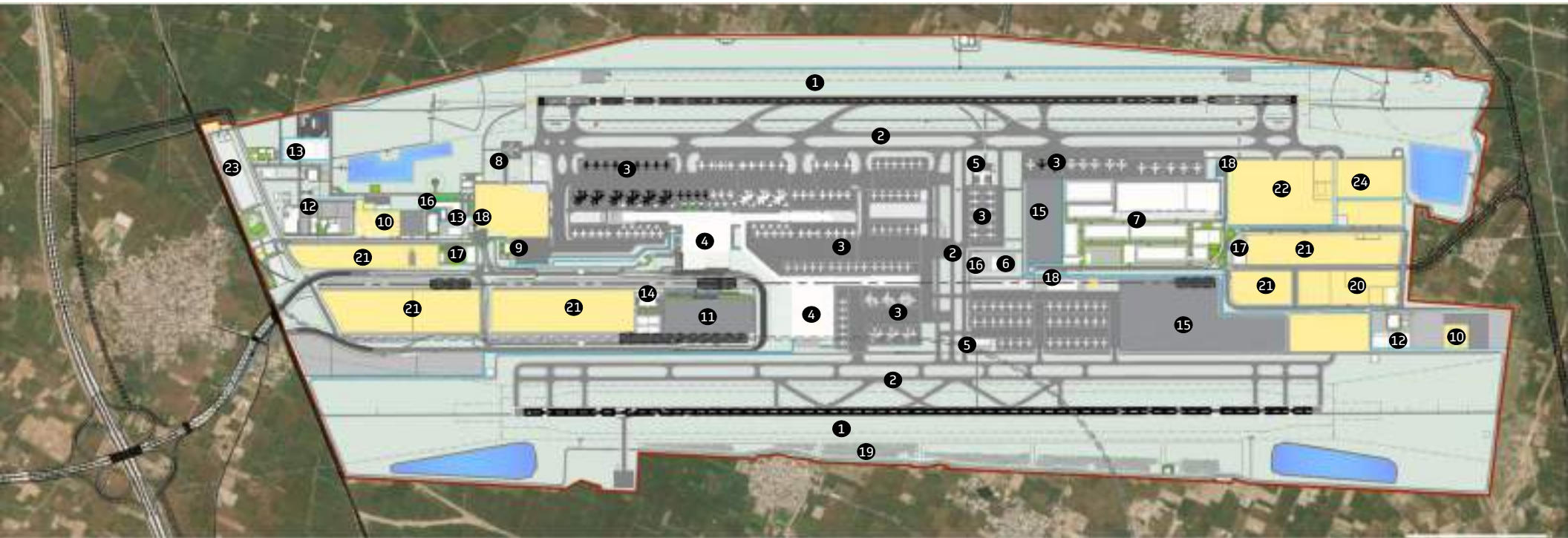
1	Introduction
2	Phase I Development
3	Design & Operations
4	Community Development & Awards
5	Project Cost & Proposed Rate Card

Infrastructure to Serve 12m Pax in 2026



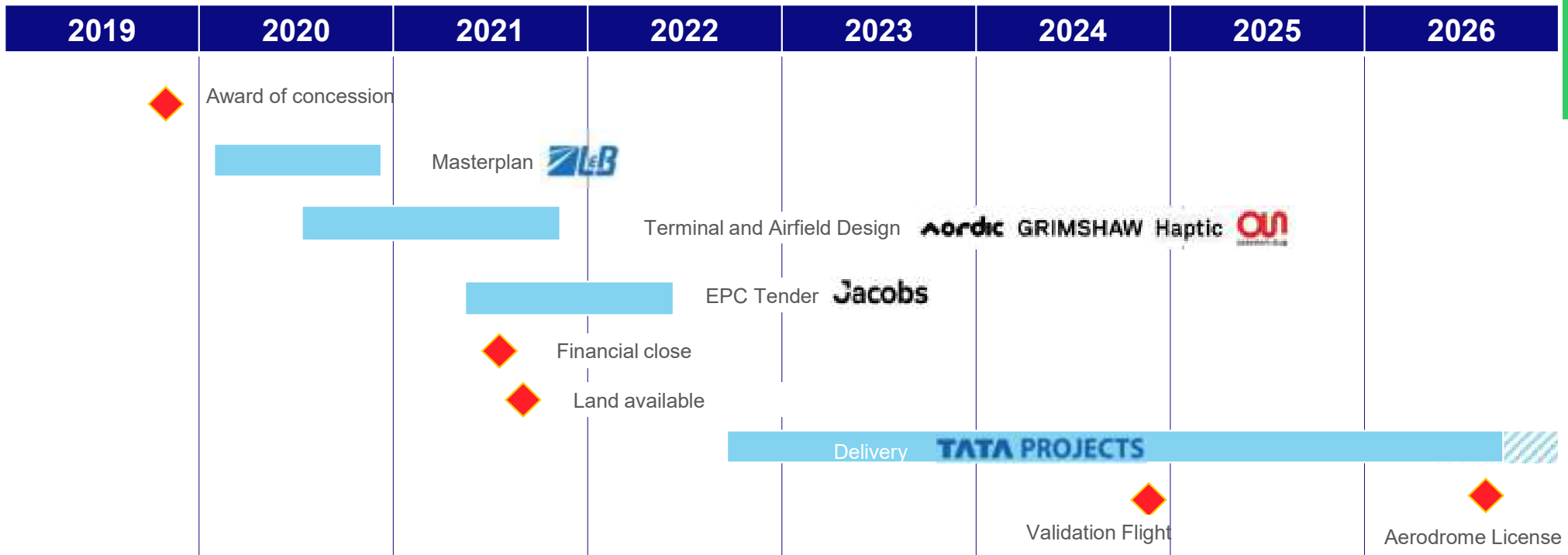
- | | | | | | | | |
|----------------|-----------|-----------|------------------------|-----------------|-----------------|---------------------------|----------------|
| ① Runway | ② Taxiway | ③ Apron | ④ Terminal Building | ⑤ ARFF & ATC | ⑥ Cargo Complex | ⑦ Isolation Bay | ⑧ VIP Terminal |
| ⑨ Fuel Farm | ⑩ Surface | ⑪ Utility | ⑫ CISF Complex | ⑬ Airport Hotel | ⑭ NIA Head | ⑮ CISF Acc. | ⑯ Operations |
| ⑰ Airside Gate | ⑱ Parking | ⑲ Canteen | ⑳ Cityside Development | ㉑ MRO Facility | ㉒ Quarters | ㉓ MOD & Authority Reserve | ㉔ Sewer |

Ultimate Capacity of Over 70m Annual Pax



- | | | | | | | | |
|---------------------|----------------|--------------|---------------------|------------------------|-----------------|-------------------|---------------------------|
| ① Runway | ② Taxiway | ③ Apron | ④ Terminal Building | ⑤ ARFF Building | ⑥ ATC Tower | ⑦ Cargo Complex | ⑧ Isolation Bay |
| ⑨ VIP Terminal | ⑩ Fuel Farm | ⑪ GTC | ⑫ Utility Complex | ⑬ Airport Maint. | ⑭ Airport Hotel | ⑮ Airside Reserve | ⑯ GSE Maint. |
| ⑰ Operations Centre | ⑱ Airside Gate | ⑲ Solar Farm | ⑳ In flight Kitchen | ㉑ Cityside Development | ㉒ MRO Facility | ㉓ Reserved Land | ㉔ MOD & Authority Reserve |

Six Years of Airport Design and Development



Foundation Stone Ceremony (November 25, 2021)



Tata Projects Break Ground on Site (June 24, 2022)



Commencement of Earthwork – Passenger Terminal Building (November 2022)



From the vision of a second International Airport for India's National Capital Region...



...to reality



Airport Readiness ensured through ORAT & Integrated Trials



DXN is all ready for its first take-off....



Strong partnerships for a successful airport



Content

1	Introduction
2	Phase I Development
3	Design & Operations
4	Community Development & Awards
5	Project Cost & Proposed Rate Card

Airside Design Approach



- Runway 10/28 Code E standard, and sized 45 m wide and 3,900 m long
- Code F Operations possible under SOP (no simultaneous movement on TWY A)
- Runway 10 approach will be CAT-I compliant, Runway 28 will be CAT-III-B compliant

- 25 Code C Stands on Passenger Apron (10 Contact)
- 6 Code E Stands in MARS configuration
- 2C / 1E Taxilane for efficient aircraft flows on Apron
- Remote Stands provisioned for future self-power out

- Full parallel taxiway from day 1
- RET in main landing direction
- RAT allowing for intercepted take-off for code C reducing taxi time



Airside Navigation Aids

SMR



DVOR



Glide Path



Localizer



ASR (N)



Airside Gate



Facilities in Terminal



Check-in Counters

48 Units including 20
SSBD (all CUPPS)



Security

9 Domestic Lines / 2
International



Immigration

8 Departure / 10
Arrival



Bus Gates

2 Domestic / 1 Swing



Baggage Makeup Area

6 Carrousel / 72
Make-Up Positions



Baggage Reclaim

2 Domestic (70m) / 1
Swing (70m) / 1 Int (90m)

Terminal Area
Approximate 138,000 sqm

Terminal Design Approach



Simplicity & Clarity



Operational Efficiency



Comfort & Convenience



Short Walking Distances



Seamless Flow



Facility Flexibility



Commercial Potential



Ease of Phasing



Commercial offerings at NIA

Commercial Area	
Category	# Units
Food & Beverages	18
Lounges	2
Retail Duty Paid	14
Retail Duty Free	2

Shops & Brands

Chaayos

SUBWAY

SAGAR

Confectionery, Tobacco & Newspaper

Perfumes

KFC

CHAI POINT

COSTA COFFEE

Sweet and Candies

wagamama

WOP

CHANEL

DIOR

LACOSTE

Swarovski

DA MILANO

MASALE TASTE OF INDIA

Domino's

Pizza Hut

Levi's

adidas

idli.com

Commercial offerings at NIA

Duty Paid



Duty Paid



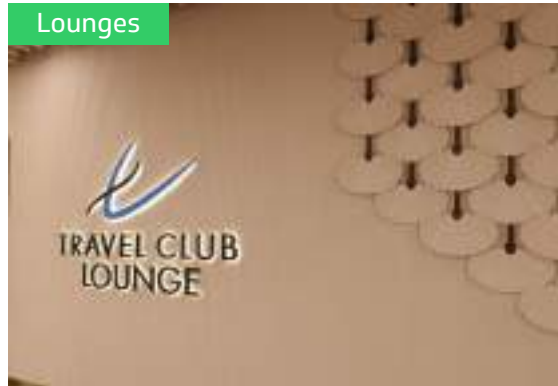
F&B



Duty Free



Lounges



F&B



Digital Driven Infrastructure



Robust in-house data platform



Fully enabled Digi Yatra



Digital experience platform to empower passenger journeys



Automation of operational processes/tracking



Sustainability Initiatives at Noida International Airport



NIA project certified by ISO 14001



4.5 MLD STP under construction Aligned with Zero Liquid Discharge



Over 50% of electricity demand shall be met by renewable energy sources



Over 800 Solar Lights - Airside



Smart on-demand illumination leading to Energy Conservation



Electrical Vehicle Fleet



Rainwater Harvesting Pond- Reducing Fresh water demand



Sustainable Landscape Development

Sustainability Initiatives in Construction

Nanogence is an innovative company specializing in advanced nanotechnology-based construction materials that enhance durability, sustainability, and performance. Its solutions aim to reduce carbon footprint and support the transition toward greener infrastructure.



65 Tons Nanogence Used | 158 Tons Cement Saved | 142 Tons CO2 Saved

LC3 (Limestone Calcined Clay Cement) is an eco-friendly alternative to ordinary Portland cement that uses a blend of limestone, calcined clay, and clinker. It significantly reduces CO₂ emissions—by up to 40%—while maintaining comparable strength and durability.



Order Placed 2000 Tons | Planned to use in various Concrete grades | CO2 Potential Savings: Upto 40%

Content

1	Introduction
2	Phase I Development
3	Design & Operations
4	Community Development & Awards
5	Project Cost & Proposed Rate Card

Skill Enhancement Program



Medical & Health Camps



Creating impact through education, sustainability, and skills at Sarvhitkari Intercollege, Daynatpur

Awards & Accolades

Geosmart Infrastructure 2023



Award for Excellence in Airport Design & Construction Presented by Hon'ble MoS General V.K. Singh

Global Environment Award 2024



Awarded by the Global Environment Excellence Foundation (GEEF), recognizing NIA's exceptional commitment to environmental conservation and sustainability.

Global Environment Award 2025



Celebrating NIA's continuous strides in environmental sustainability and conservation.

Sustainability Award at Build India Infra Awards 2024



Acknowledging NIA's relentless efforts towards integrating sustainable practices in infrastructure development. Presented by Hon'ble Shri Nitin Gadkari, Minister of Road Transport and Highways

iNFHRA's Global Environment Award 2025



Diamond Award under Excellence in ESG Category for overall Net Zero Strategy and various Sustainability initiatives being undertaken at the Project Site.

Content

1	Introduction
2	Phase I Development
3	Design & Operations
4	Community Development & Awards
5	Project Cost & Proposed Rate Card

Total Capex of NIA for Phase 1 Development



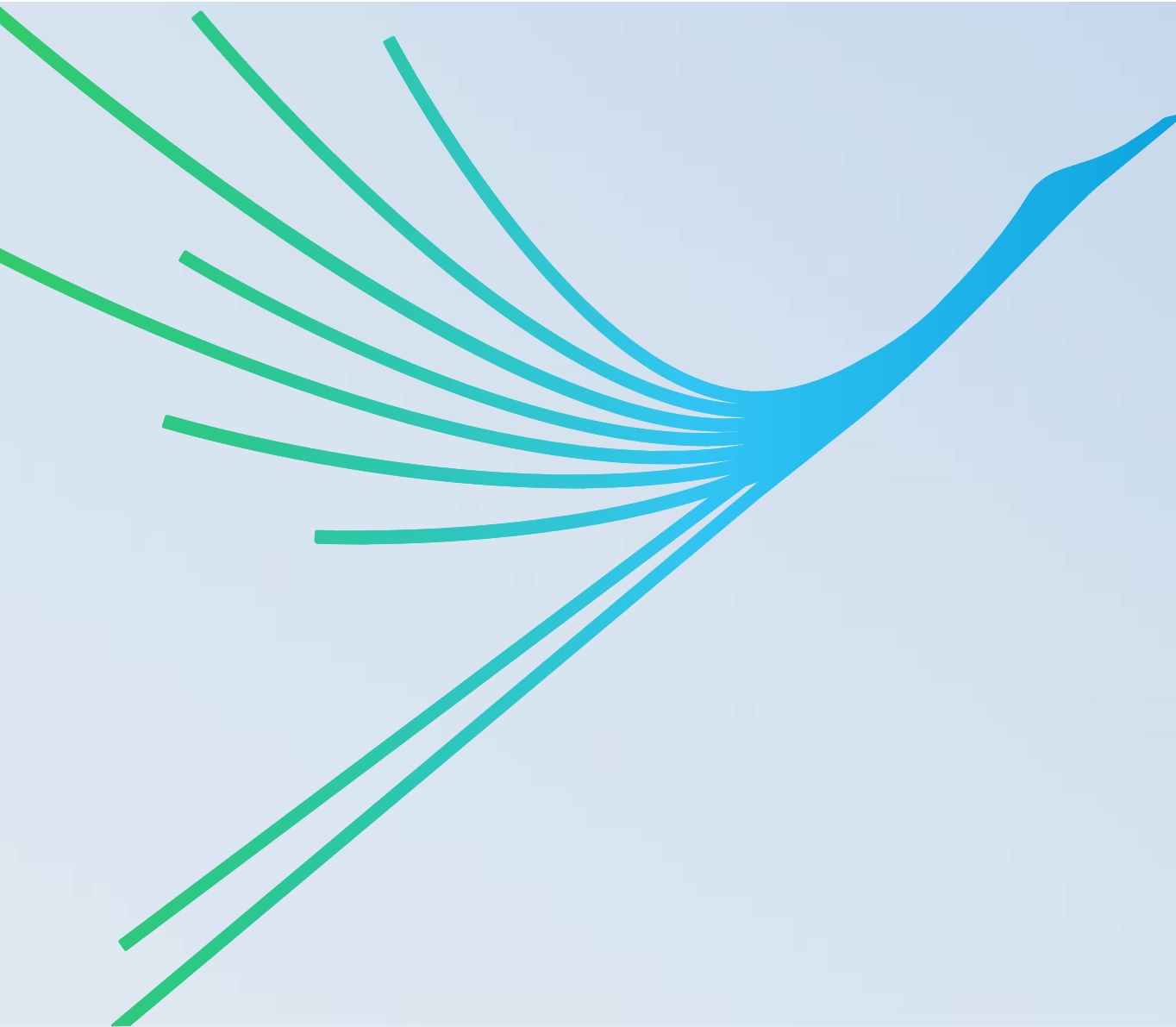
Aeronautical Tariffs for First Control period basis 70mn Traffic basis AERA’s projection

	FY 2027	FY 2028	FY 2029	FY 2030	In INR FY 2031
UDF					
Domestic	935	1075	1155	1235	1315
Arrival	283	323	347	371	395
Departure	653	753	809	865	921
International	1720	2000	2160	2320	2480
Arrival	520	600	648	696	744
Departure	1200	1400	1512	1624	1736
Landing					
Domestic					
<100MT	760	791	822	855	889
>100MT	1,005	1,044	1,085	1,128	1,173
International					
<100MT	870	905	941	979	1,018
>100MT	1,131	1,176	1,223	1,272	1,323
Parking					
<100MT	25	25	25	25	25
>100MT	25	25	25	25	25
Housing					
<100MT	50	50	50	50	50
>100MT	50	50	50	50	50

Notes :

- AERA traffic projections exceed NIA’s FCP estimates by ~10 million
- Airport Operator estimates 60 Mln passenger and opted for under recovery of ARR with proposed tariffs

Cute/CUSS shall be chargeable as 1 USD per departing Pax



Noida International Airport

YIAPL Site office, Kishorepur, Jewar

Uttar Pradesh, India

contact@niairport.in

www.niairport.in